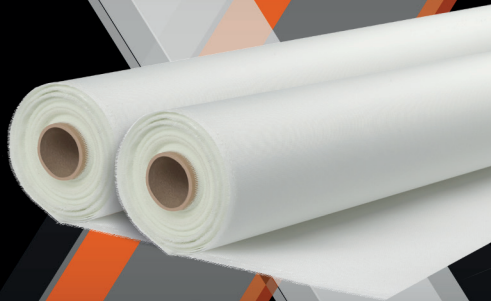


**OBEX**

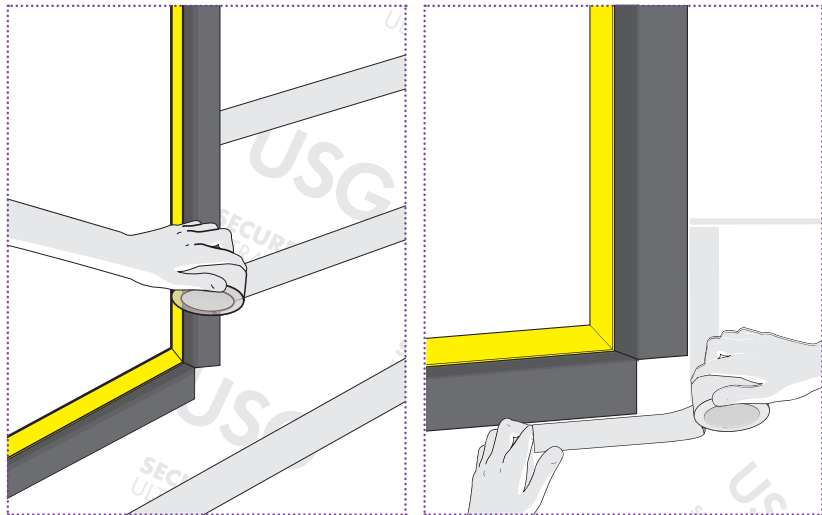
PROTECTING YOUR SUCCESS

How to Install...

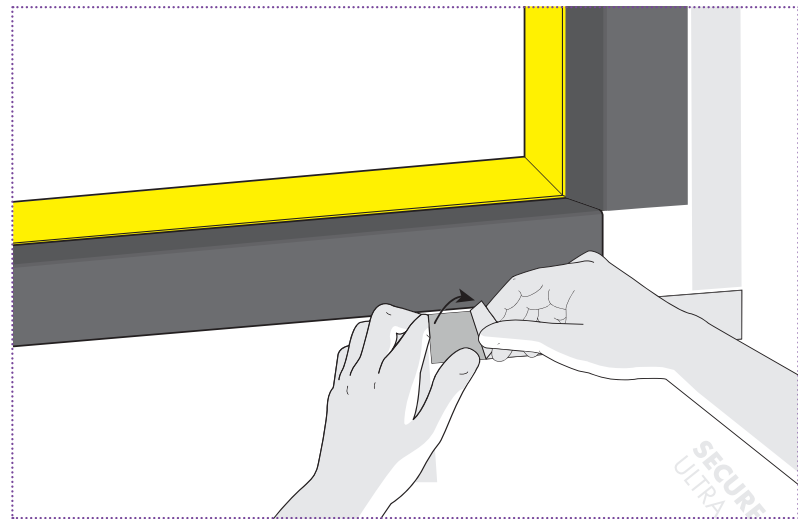
**Cortex® 0220FR  
Class A1 Breather  
Membrane**



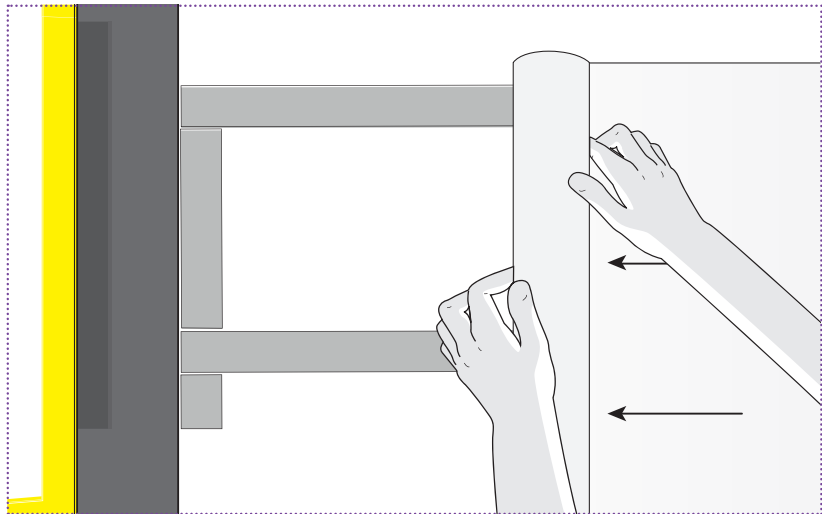
[www.obexuk.com](http://www.obexuk.com)



Start by applying the Cortex® Double-Sided Tape; 3 strips to cover the width of the membrane (allowance for a 100mm horizontal lap should be made). After this, apply tape to ensure all edges of the membrane will be adhered e.g. where the membrane is cut around windows and other penetrations.

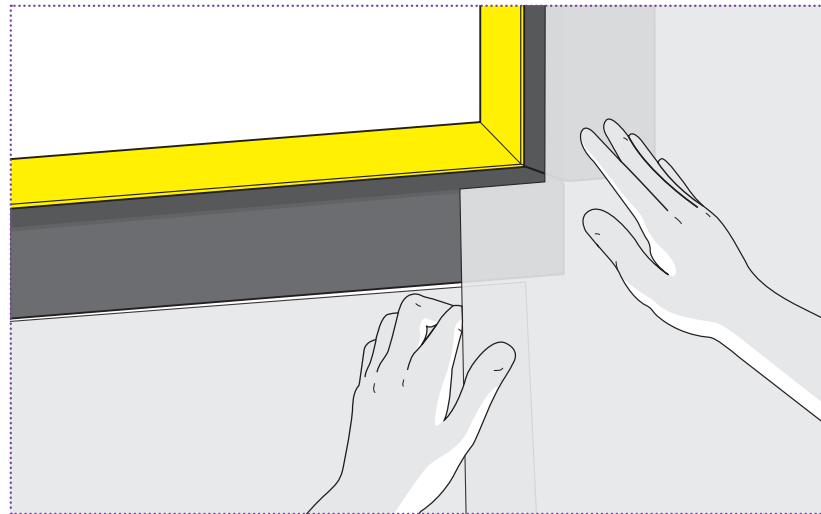


Once the previous step is complete, peel off the release liner from the Cortex® Double-Sided Tape. Some may prefer to remove the release liner as they adhere the membrane.



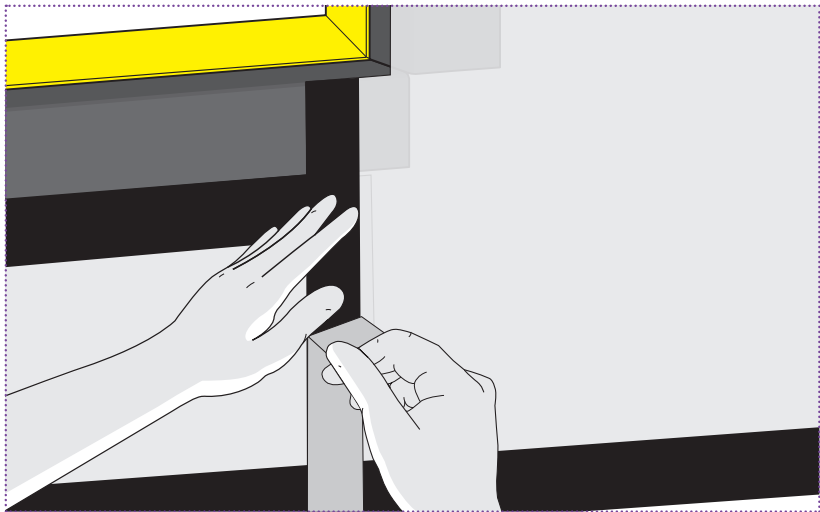
3

You're now ready to apply the breather membrane. Place the roll into position to cover the strips of double-sided tape and start rolling the membrane over the tape.



4

Where possible, the membrane should be continuous so any penetrations should be cut out during application, or it can be applied over the top and cut out afterwards. Horizontal laps should be 100mm and vertical laps 150mm. Vertical laps should also be staggered where possible.



Finally, use the Cortex® UV Facade Tape to seal off all the edges.

5

## Tips

- » The membrane should be fixed in such a way as to shed water away from the sheathing board and below the lowest timber/steel frame. Upper layers should be lapped over lower layers.
- » Horizontal laps should be at least 100mm and vertical laps 150mm. Vertical laps should be staggered wherever possible.
- » To assist in achieving the required air permeability, the lap joints and penetrations through the underlay can be sealed with Cortex® UV Facade Tape and Cortex® Double-Sided tape.
- » Overlaps of at least 300mm should be allowed on corners.



**CORTEX**<sup>®</sup>  
Fire Rated Sealing System

For technical assistance, call **01905 337800**,  
email **[sales@obexuk.com](mailto:sales@obexuk.com)** or visit **[www.obexuk.com](http://www.obexuk.com)**